



Spec2TestAI™

*Subscription – Use Based Pricing
Schedules*

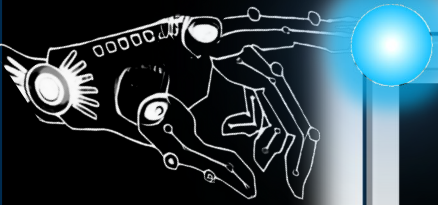
Where Agile Meets Intelligence™

Spec2Lite™ - Annual Subscription Tiers



| Annual Set Up and Subscription Fees | | |
|-------------------------------------|------------------|-----------------------------------|
| Number of Users | Annual Setup Fee | Monthly Subscription Fee Per User |
| Up to 5 | \$150pp - \$600 | \$20 |
| 6-20 | \$900 | \$20 |
| 21-50 | \$1,200 | \$20 |
| 51-100 | \$1,500 | \$20 |
| 101-500 | \$2,000 | \$15 |
| 501-1000 | \$2,500 | \$15 |
| 1,001+ | \$3,500 | \$10 |

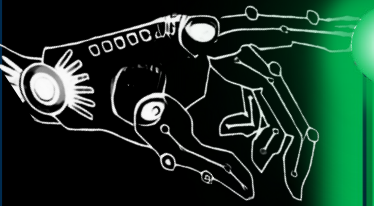
Spec2Lite™ - Usage Tiers



| Usage Fee (AI Engagements)* | |
|-----------------------------|--------------------|
| AI Engagements/Month | Monthly Bulk Price |
| Up to 50 | \$40 per User |
| Up to 100 | \$75 per User |
| Up to 500 | \$150 per User |
| Up to 1,000* | \$250* |
| Up to 5,000* | \$750* |
| Up to 10,000* | \$1,500* |
| Up to 25,000* | \$2,500* |

*AI Engagements are applied across team members

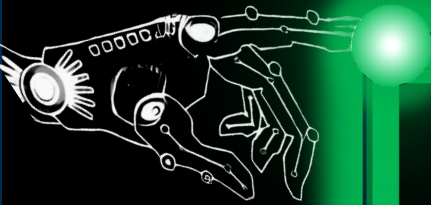
Spec2Lite™ Plus Security – Annual Subscription Tiers



Annual Set Up and Subscription Fees

| Number of Users | Annual Setup Fee | Monthly Subscription Fee Per User |
|-----------------|------------------|-----------------------------------|
| Up to 5 | \$200/pp - \$750 | \$25 |
| 6-20 | \$1,000 | \$25 |
| 21-50 | \$1,250 | \$25 |
| 51-100 | \$1,750 | \$25 |
| 101-500 | \$2,500 | \$20 |
| 501-1000 | \$3,500 | \$20 |
| 1,001+ | \$3,750 | \$15 |

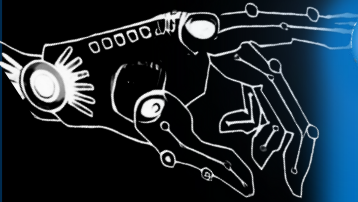
Spec2Lite™ Security - Usage Tiers



| Usage Fee (AI Engagements)* | |
|-----------------------------|----------------|
| AI Engagements/Month | Bulk Price |
| Up to 50 | \$45 per User |
| Up to 100 | \$85 per User |
| Up to 500 | \$160 per User |
| Up to 1,000* | \$300* |
| Up to 5,000* | \$900* |
| Up to 10,000* | \$1,750* |
| Up to 25,000* | \$3,600* |

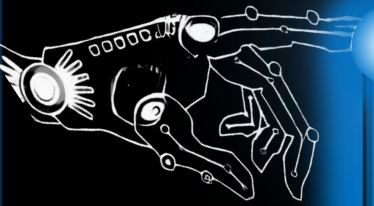
*AI Engagements are applied across team members

Paradigm™ - Annual Subscription Tiers



| Annual Set Up and Subscription Fees | | |
|-------------------------------------|--------------------|-----------------------------------|
| Number of Users | Annual Setup Fee | Monthly Subscription Fee Per User |
| Up to 5 | \$250/pp - \$1,000 | \$40 |
| 6-20 | \$2000 | \$40 |
| 21-50 | \$5000 | \$40 |
| 51-100 | \$10,000 | \$40 |
| 101-500 | \$15,000 | \$35 |
| 501-1000 | \$25,000 | \$35 |
| 1,001+ | \$40,000 | \$30 |

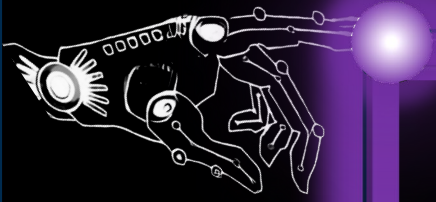
Paradigm™ - Usage Tiers



| Usage Fee (AI Engagements)* | |
|-----------------------------|----------------|
| AI Engagements/Month | Bulk Price |
| Up to 50 | \$50 per User |
| Up to 100 | \$95 per User |
| Up to 500 | \$200 per User |
| Up to 1,000* | \$400* |
| Up to 5,000* | \$1,250* |
| Up to 10,000* | \$2,500* |
| Up to 25,000* | \$5,000* |

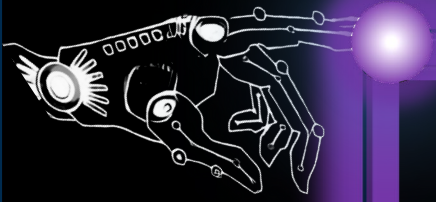
*AI Engagements are applied across team members

Abriz™ - Annual Subscription Tiers



| Annual Set Up and Subscription Fees | | |
|-------------------------------------|-------------------|-----------------------------------|
| Number of Users | Annual Setup Fee | Monthly Subscription Fee Per User |
| Up to 5 | \$300/pp - \$1250 | \$50 |
| 6-20 | \$3,500 | \$50 |
| 21-50 | \$7,500 | \$50 |
| 51-100 | \$15,000 | \$50 |
| 101-500 | \$25,000 | \$45 |
| 501-1000 | \$35,000 | \$45 |
| 1,001+ | \$50,000 | \$40 |

Abriz™ - Usage Tiers



| Usage Fee (AI Engagements)* | |
|-----------------------------|----------------|
| AI Engagements/Month | Bulk Price |
| Up to 50 | \$50 per User |
| Up to 100 | \$90 per User |
| Up to 500 | \$350 per User |
| Up to 1,000* | \$750* |
| Up to 5,000* | \$3,000* |
| Up to 10,000* | \$5,750* |
| Up to 25,000* | \$15,000* |

*AI Engagements are applied across team members

Explanation of Key Terms and Fees

AI Engagements - There are 2 AI Engagement buttons in green which are located on the lower right of the screen at the end of Step 1 and Step 2. These buttons are manually triggered and are labeled:

- 1) “Save & Analyze”
- 2) “Generate Test Cases”

The green AI Engagement buttons are used to make a call to our specifically trained AI engine in order to analyze and produce assets, which are then returned to the UI. Clicking either green button will result in one (1) AI Engagement. Users can monitor the number of AI Engagements consumed/remaining in their Account Settings

Tiered User Option – **Add \$5/month/user** – The tiered user option allows for an Administrative User View of all team projects and the Individual User View of only the project(s) the Individual is assigned by the Administrator.

Set Up Fee – One-time annual fee to cover user set-up, updates, and maintenance fees.

Subscription Fee – Monthly fee that provides unlimited access to the product of choice.

AI Engagement Overage – The success of AI Engagements are dependent on several variables, some of which are out of the user’s and AgileAI Labs’ control. Though infrequent, we know that system glitches can occur, and to alleviate undue stress on our customers, **we will increase each monthly AI Engagement threshold by 10%** to cover unavoidable glitches.